



---

# CRUZIANA

GEOPARK NATURTEJO DA MESETA MERIDIONAL-EUROPEAN AND GLOBAL GEOPARK - MONTHLY REPORT

**In this issue:** – Cooperation Agreement with Tianzhushan Global Geopark – University of California in a summer course at the Geopark – II Meeting House of Sciences at Oporto – IX National Congress of Geology – Watermelon Festival of Ladoeiro sells 40 tons...and more!



Olá/Hola/Ciao/Bonjour/Γειά σου/Hallo/God Dag/Salut/Zdravo/Hello/Ahoj/Helo/Helló/ Hei/  
Dia duit/Bok/Kaixo/Pozdravljeni/Czesc/Halló/Merhaba

## **Geo-stories of our places and people: Isna**

Isna may as well be declared as the capital of the Alvelos Mountain. Well nested between the Lontreira Mountain and the Cabeço Rainha, at 1084m the second summit of Naturtejo Geopark territory, the houses of good schist architecture follow the headwater of the Isna Stream. Here rises this important stream that soon creates a deep and winding valley that meddles between faults and cracks, through 45 km, from the rounded summits of the Alvelos Mountain to Fernandaires, already in Vila de Rei. It is the valley of the Isna Stream that brings fertility to the soils and landscapes of this 27,58 km<sup>2</sup> territory, which into it turn the five settlements and places that define it: Isna, Ribeira de Isna, Pedintal, Vale da Cuba and Vale da Lousa. The vegetable gardens are the ones that extend themselves to the river, where there are plenty of Corn, Hill Cabbages and the Seven Hill Mellon; the schist bridges that once connected this lands to their small world, Vale da Cuba, Corga do Moinho, Várzea Longa and Azenha; the numerous water-mills that turned the corn into a corn-bread still famous nowadays in this lands, and create small weirs and waterfalls worth to discover, especially in the summer. In the Azenha do Barbeiro, a meander of the Isna Stream was accented by Human hand in order to establish the connection between the two erosive riverbanks, thus creating a great waterfall soon used to activate a water-mill. The fertile original waterway in the meantime abandoned by the stream was used for agriculture and to create a reservoir with fine conditions for developing an excellent river beach in the limit with the municipality of Proença-a-Nova. But this geosite and the entire valley of Isna Stream do not exhaust the grounds of interest in this area. Isna, at 730 m high, is filled with snow colours during the winter and with freshness in the summer. In its edge the secular Chestnuts abound, with their imposing trunks, which in S. Martinho they delight the entire region. In a mountain village, where the traditional smoked meat has privileged conditions for its existence and developing, it is worth to mention the goat in a so unique and diversified gastronomy, from the delicious cheese to the typical "maranho" sausage. A lengthier visit through the village and its places, where there are no more than 209 inhabitants, makes up in any time of the year for the good mountain air and the strolls in the silent tracks, for the fauna and flora observation in the Nisa Stream, for the diversity and quality of the local products, for the yet abundant traces of the schist traditional architecture and for the local stories. The Fountain of the Women is a 19th century work resulted from a request made to the King D. Carlos when he decided to make a royal hunt in this place. The Isna Stream is an axis with strong touristic potential, which could be accomplished by developing a nature interpretation trail and by river descents in canoeing, kayak or rafting. Canyoning is another nature sport activity that can get some development in this region.



**Olá/Hola/Ciao/Bonjour/Γειά σου/Hallo/God Dag/Salut/Zdravo/Hello/Ahoj/Helo/Helló/ Hei/  
Dia duit/Bok/Kaixo/Pozdravljeni/Czesc/Halló/Merhaba**

The mountains all around Isna have potential to be explored on foot, on BTT or on touristic four-by-four. For enjoying this entire offer, still lacks the accommodation, the restaurant and the handcraft shop, infrastructures yet to be designed. But it would not take long to the useful discovery of one more raw gem of our geopark...

#### References

Neto de Carvalho, C., Rodrigues, J.C. & Gonçalves, D. 2013. Património Geológico de Oleiros: inventário de geossítios e propostas para a sua valorização. Açafa On-line, 6, 4-61.

Pimentel, J.M.P.A. 1881. Memórias da Villa de Oleiros e do seu concelho. Typographia da Virgem Immaculada, Angra do Heroísmo, 358pp.

The Editor  
Carlos Neto de Carvalho  
Scientific Coordinator  
Geologist

Front page: (Objectiva: Geopark Project)



# ACTIVITIES OF THE MONTH



**30 June to 4 July - Appalachian Trail Maine Chapter members walk in the Geopark.** “The Naturtejo Geopark of Portugal has over 1700 square miles of geological wonders, ancient mines, quaint villages and breathtaking landscapes. It's also the place where IAT-SIA Portugal is being laid out and built. My husband, Brian and I, spent five days there in early July walking on the ancient cobblestones and river paths and checking out the latest IAT-SIA trail.

Geologist Carlos Carvalho, the scientific coordinator for the Geopark, met us at the park's headquarters in the city of Castelo Branco. He had books, maps and four full days of great walks.

The first day took us the village of Salvaterra do Extremo and the “Vulture Trail”. We walked in the shadow of a 9th century castle and along the banks of the Erges River between Portugal and Spain. We even saw a few vultures, griffons and white storks.

Next we went to Penha Garcia, a larger village with the impressive “Fossil Trail”. The walk took us through a Templar castle, past bedding planes that revealed Paleozoic trilobites and their trails and back to town through small farms, cork oaks and olive groves. The trail is impeccably maintained by Mr. Domingues who is happy to show all visitors the fossils and restored ancient mill.

Monsanto, known as “the most Portuguese village”, is a lovely town built around boulders and protected by another Templar castle. From Monsanto we walked to the village of Idanha-a-Velha along the Trans European Grand Route (which runs from Portugal to Romania). Idanha-a-Velha has the distinction of being the “smallest Roman city” and the inscribed blocks attest to its place in the Roman Empire.

Day three took us to the small village of Perais and a walk down to the Tejo, the longest river on the Iberian Peninsula. We walked to the Tejo again that afternoon from the town of Santana. The trail took us by a vast boulder field - the remains of an immense Roman gold mine - pine plantations and small shaft mines. A large group of griffon vultures living in a nearby cliff circled overhead.

We spent our last day with Carlos, Monica, a Naturtejo Geopark intern and Daniel, a geographer from the village of Estreito who is responsible for the new IAT-SIA trail here in the municipality of Oleiros. We walked parts of the new trail - some of it shared with gigantic windmills - and ate cherries from Daniel's family orchard.

We spent our last night in Estreito at the welcoming and comfortable guesthouse of José and Fernanda.”

Rebecca Marvil



**30 June to 11 July – Short traineeship at the Geopark.** Naturtejo Geopark hosted once again an internship in the Course of Rural and Environmental Tourism. Marta Carlos from the Basic and High School Ribeiro Sanches of Penamacor made a ten day internship, for future insertion in the world of work and in the day-to-day of Naturtejo Geopark. The aim of her work was to collect and organize data concerning the touristic resources of Penamacor municipality, on the scope of this municipality integration in the Naturtejo Geopark territory.



**2 July – Training day at Portas de Ródão Natural Monument .** Training in work context continues in the main touristic attractions of Naturtejo Geopark. This time, Carlos Neto de Carvalho took Naturtejo and the outdoor company Geolife collaborators to discover the municipality of Vila Velha de Ródão and the Portas de Rodão Natural Monument, supported by local technicians and businessmen. They started by visiting the Tourism Office and the former Olive Oil Press of Pesqueiras. Next, they moved forward to the Tagus Rock Art Interpretation Centre and to the Tagus Art and Culture Hall. They visited the Portas de Rodão Touristic Complex where they were welcomed by the associate Nuno Coelho. There was time for a gastronomic experience in the typical village of Arneiro, with the famous river fish crumb. Afterwards, they visited the Roman gold mine of Conhal do Arneiro and end up by visiting the Portas de Rodão viewpoint, making the landscape interpretation.





**2 July – Peddy Paper “Environment Friend” for the ATL of Idanha-a-Nova.** This activity took place in the Border Fair festival square, in Idanha-a-Nova and was intended for 35 children and youngsters and 4 monitors from ATL Summer Vacations. The participants had to fill a guide and participate in 3 games (waste selection; puzzles of 6 geopark geomonuments; traditional game). The activity was energized by Hugo Oliveira and Manuela Catana, supported by a technician from the municipality of Idanha-a-Nova and 3 interns from the Professional Course in Rural and Environmental Tourism, of EPRIN.



**2 to 7 July – California college students study Portuguese Language and Culture at the Naturtejo Geopark.** For the fifth consecutive year, students from California studied, over five days, in the Naturtejo Geopark. Seven students are attending to the Summer Course “Portuguese Language, Literature and Culture” hosted by the University of California in San José. The referred course began at 19 June, in the city of Ponta Delgada, Azores and will end at 14 August in Lisbon. The students attend to several degrees. The course coordinator is the Professor Deolinda Adão, Chair of the Portuguese Program for the State University of California in San José and executive director for the Program: Portuguese Studies of the University of California (Berkeley). The Superior School institutions partners in this initiative are the University of Azores and Coimbra, Lusófona of Oporto and Lisbon, as well as the Polytechnic Institute of Castelo Branco, through the Management Superior School of Idanha-a-Nova. Naturtejo Geopark has set, supported by the Municipality of Idanha-a-Nova, an educational program intended for these youngsters, in the geopark territory. During their stay, the students participated in classes of Portuguese Language and Literature, administered by the Prof.ª Deolinda, in the Management Superior School, in Idanha-a-Nova and in field classes taught by Manuela Catana, in some geomonuments of Naturtejo Geopark. Also took place visits and a workshop oriented by technicians from the Municipality of Idanha-a-Nova, in Idanha-a-Velha, Proença-a-Velha and Idanha-a-Nova. They met the Ichnological Park of Penha Garcia, the Olive Oil Press Museum centre of Proença-a-Velha, in Segura they visited the Biodiversity Interpretation Centre “Lands of Idanha” and they went to meet the concept and products of the company “Scents of Valado”.

They yet had the opportunity to know and try the Thermal Spa of Termas de Monfortinho. In Idanha-a-Nova, they visited the exhibits from the Cultural Forum, joined in an essay with the “adufe” players from the town’s Ethnographic Folk Group and learned to make the instrument “adufe” in a Workshop held in the Traditional Art and Trade Centre. They ranged the Boulders Trail in Monsanto and left for the discovery of the Historical Village of Idanha-a-Velha. They travelled by boat in the Portas de Ródão Natural Monument and at the CACTEJO Garden they admired the Fossil Trunks of Vila Velha de Ródão

**4 to 5 July – Visit of the Association for the Development of Baixo Alentejo to Idanha-a-Nova.** A dozen technicians from local municipalities; local development and heritage associations came from the region of Mértola for an inspection visit to the Naturtejo Global Geopark to learn with our best practices. They visited some farms in Idanha-a-Nova and met Carlos Neto de Carvalho at the Hotel Estrela de Idanha for an introduction to the concept and management of the Geopark. Then they visited the museum dedicated to the olive oil at Proença-a-Velha, the national monument of Idanha-a-Velha and the national monument of Monsanto, with a short walk by the historical village.

**4 to 6 July – Biodiversity Tour across the Geopark.** A family with one kid came to discover some of the best biodiversity in Portugal. Together with João Geraldês from the Geo-Resort Casa do Forno they made off-road the Deers Tour viewing the Tejo Internacional Natural Park. After a picnic in the wilderness they hiked the Vultures Trail and found griffon vultures, eagles and storks in their living habitats, such as the Erges gorge, a granite geosite. Next day they moved to Portas de Ródão Natural Monument to find the heart of the Talhadas mountain on boat.

**11 to 13 July – the Lynx Fair: Geopark for the first time in Penamacor.** Penamacor is a municipality preparing its integration in the Naturtejo Geopark. Its annual fair is dedicated to the severely threatened lynx that lived here and still remains as a symbol of this region nature, as well as to the local products. This year Naturtejo Geopark was at the Lynx Fair to introduce itself, to its touristic products and associates, key role coordinated by Sérgio Ribeiro.



**14-16 July – II Meeting House of Sciences at Oporto.** Took place in the Superior Institute of Engineering in Oporto the II Meeting House of Sciences, under the theme “Teaching and Disclosure of Science in the Digital World of the Early XXI Century”. Around 400 professors from the Primary and Secondary Teaching in the field of Sciences attended to discuss the digital adaptation to the evolution in the teaching system and vice versa, to better understand how the content evolution and teaching goals embody the digital, envision the evolution of tools and technologies, match digital solutions to contexts and educational and disclosure necessities, to know the ways of science itself. Naturtejo Geopark was present with its own disclosure space, giving to know its territory and its activities to this wide audience, which is a target for the Geopark’s educational programs. Joana Rodrigues was invited as Ambassador for the House of Sciences to present the communication “Digital resources in service to the Mining Heritage in Naturtejo Geopark”, under the theme “Motivation, content and strengthening by digital means” introducing two projects made in partnership with the Superior School of Technology of Castelo Branco, under coordination of the Professor Pedro Silva: a virtual tour to an abandoned mining adit from the 2nd world war times and a reconstitution of the mining exploitation in the Iron Age.





**14 July - Visit to the "Quinta dos Salgueiros" under the scope "Organic Farming and Permaculture" for the ATL of Idanha-a-Nova.** In this visit participated 46 children and youngsters followed by 4 monitors from the ATL, by Hugo Oliveira and by a technician of the Idanha-a-Nova municipality. The activities energized by Farm Environmental Educators team included the explanation about mushroom spread, an experimental activity about the permeability of different soils, the seeding and transplantation of vegetable products (watermelons, potatoes, lettuces, and carrots), the animal feeding and yet making and implementing nameplates for the plants already existent in the farm.



**16 to 18 July - Revalidation mission to China Funiushan Global Geopark.** On the scope of the commitments that Naturtejo Geopark has within the Global Geoparks Network, Carlos Neto de Carvalho was once more invited by the UNESCO Earth Sciences Section and by GGN to participate in the revalidation mission for the China Funiushan Global Geopark, located in the province of Henan, with an area of 1522km<sup>2</sup> distributed by 5 municipalities, each one with its own Thematic Scenic Area. Together with Tomas Ridkosil from the Bohemian Paradise Global Geopark, of Czech Republic and a technical and administrative local staff of great professionalism and enthusiasm, they had the opportunity to visit some of the most emblematic places of this geopark, examining the actual execution of the defined guidelines in the last revalidation, such as: the museum complex and the Xixia Park for the dinosaur palaeontology popularization, with 1 million visitors annually; the Geoscience Expedition Route of the Qinling Orogenic Belt 311 to investigation and educational resource with the Prof. Zhang Tianyi who studied the area for 40 years, under an improving project; the magnificent hotels of Guanhe Zhongzhou and Yishuiwan; the Huashan Village, regarded as "Model Village in Tourist Reception", with an excellent welcoming and unforgettable experiences; the well-equipped and interesting Laojieling, making the separation between the North and South of China; the remarkable Laojunshan Tourist Service Center and the hike through the abyss of the Luanchuan Park, an unforgettable place; the extremely rich cultural park of Laotzu and the Jiguan Cave. The revalidation ended in the Industry-University-Research Base of China University of Geosciences with a meeting between the evaluators, local politicians and technicians from the geopark Funiushan.



**16 to 27 July – Summer animation of Termas de Monfortinho.** Once more Naturtejo Geopark joins the Municipality of Idanha-a-Nova in the hosting of a summer animation program for Termas de Monfortinho. The summer is heating on with the arrival of a high number of tourists. The suggestion includes lots of music, hiking trails, open-air movies and several sporting activities.



**18 to 24 July – Naturtejo Geopark in the IX National Congress of Geology.** Took place in the University of Oporto the IX Geology National Congress, the most important scientific meeting in the area of the Geosciences in Portugal, which gathered around 310 geoscientists, this year under the issue "Earth Sustainable Development: New Frontiers". This edition also hosted the 2nd Congress of Geology for the Portuguese Speaking Countries. 13 thematic sessions took place, among them Geosciences for Society, where Joana Rodrigues presented the communication "Disclosure of Geosciences at the Nioaque Regional Centre – Geopark Bodoquena-Pantanal (South Mato Grosso – Brazil)" on the scope of the partnership between Naturtejo Geopark and the Geopark Bodoquena-Pantanal. In the Palaeontology session works of Carlos Neto de Carvalho were also present under different subjects of national and international Ichology. Simultaneously, Naturtejo Geopark was present at the Living Geology Tent intended for the students of the Primary and Secondary Education attending the Junior University of the Faculty of Sciences in the University of Oporto. Naturtejo Geopark integrated the Portugal Trilobites Tour, in partnership with the Valongo Palaeozoic Park and the Geological Interpretation Centre of Canelas coordinated by Professor Helena Couto from the University of Oporto, having been energized some edutainment activities around the trilobites subject.

**19 to 20 July – Watermelon Festival attracts thousands and sells 40 tons.** The 10th edition of the Watermelon Festival of Ladoeiro received this weekend thousands of visitors and asserted itself as one of the best gastronomical events in the entire region. Seduced by one of the Idanha-a-Nova flat land main products, the visitors yet enjoyed a program full of music, cultural activities and lots of entertainment. The event also aimed for energizing the local economic, creating, for more than one hundred of producers, an excellent opportunity for promoting and selling their products, thus contributing for the sustained development in the municipality. Armindo Jacinto stated that the Ladoeiro watermelon prestige "calls people from all around the country and beyond", for a festival that it is nowadays a reference in the affirmation of the endogenous products.

On his turn, the mayor of Ladoeiro village, Gonçalo Costa, praised this 10th Watermelon Festival as one of "the best ever", thanks to the remarkable selling rhythm and to a "very strong animation offer". One of the festival innovations was introduced by "Hortas D'Idanha", a company invested by the municipality, by producers and economic agents, which introduced the black striped watermelon, a new variety that joins the striped watermelon and the seedless watermelon. "Hortas D'Idanha", which works with around 20 watermelon producers, introduce in the market 1.500 tons of this fruit annually, number that tends to increase. Other highlights of this fair were the election for the heaviest watermelon, prize taken by a 19,28Kg specimen from the Aboiz Farm, and the VIIIth Sculpture in Watermelon Contest.



### **20 to 21 July – Visit to China Tianzhushan Global Geopark for developing cooperation.**

Naturtejo Geopark of the Meridional Meseta and the China Tianzhushan Global Geopark developed recently a cooperation agreement that aims to an active change of experiences in the technical fields of management, tourism and business relationship. In this area, Tianzhushan Global Geopark, through its Chairman Wang and its manager Guosheng Yu invited Carlos Neto de Carvalho, at the time in a revalidation mission to the Geopark Funiushan for the Global Geoparks Network, to a technical visit to this magnificent territory located in the province of Anhui. With an area of around 400km<sup>2</sup>, it is placed next to the city of Qianshan. National Park since 1982 and National Forest Park since 1992, is part of the Global Geoparks Network since 2011. With around 3000000 visitors per year, is not always easy to walk through this granite mountain called Longwo. However, a strong investment in the hiker's access allows a 500m climbing through a large stairway between the boulder chaos, with all the security and support conditions. On the top all wish to reach the sight of the Tianzhu Peak viewpoint, to see a classic bornhardt that rises itself above 200m. The walk continues through woods of Azalea, caves and aerial walkways of extreme beauty. There was still time to visit the cultural landscape of the Budist Temple of Sanzu, with poetry of different ages written in the rocks that follow up the river, more than 300 inscriptions that extend themselves in time through 900 years. On the next day, there was time to visit the archaeological and paleontological museum and to admire in the spot the magnificent paleontological deposits of the Palaeocene, always properly followed by a local researcher who has dedicated himself to the fossil collecting for more than 20 years. In the meeting for the cooperation agreement recognition between geoparks, Carlos Neto de Carvalho shared his impressions concerning the Tianzhushan Global Geopark and made a presentation of Naturtejo Geopark, after the observation of an interesting movie about the Chinese geopark and its respective presentation made by Guosheng Yu. Taking advantage of the questions made by the technicians who attended the meeting, Carlos Neto de Carvalho and Kejian Xu, professor from the University of Beijing, shared with Chairman Wang some ideas for the future cooperation. At the end, took place the usual gifts exchange that promoted the cultural richness of the millenary granite that both territories share.



**23 to 24 July – Chinese tourists visit the Geopark.** 31 visitors native from China made the Boulders Trail of Monsanto, hiking the tracks of the Granitic Inselberg of Monsanto and the traditional streets of the Most Portuguese Village of Portugal. Afterwards, took place the visit to Penha Garcia, passing through the narrow streets of the historical centre and climbing to the viewpoint where the group unveiled the geological past of the Mountain of Penha Garcia, with the guide Joana Rodrigues.



**26 to 27 July - The private bank BES in the Geopark.** The Cultural and Sporting Group of BES Workers, composed by 42 people, were followed by the company Actigeo in this visit to the Geopark. They started with a boat trip through the Portas de Rodão Natural Monument. After having lunch in the typical village of Foz do Cibrão they left to Idanha-a-Velha, where they made a quiet walk passing by the Cathedral, Olive Oil Pole Press, Roman Bridge, Templar Tower and Wall. In Penha Garcia, they could only have time to a short visit through the village. On the next day, they took their time to visit the historical village of Monsanto and the Olive Oil Pole Press Complex of Proença-a-Velha. Afterwards, the time was for visiting the Sanctuary of Sra do Almortão, where the lunch was served.



**28 July - National Day for Nature Conservation celebrated by the ATL of Idanha-a-Nova in the Portas de Ródão Natural Monument.** On this important day, 39 children followed by 4 Monitors of the ATL Summer Vacations of Idanha-a-Nova celebrated the National Day for Nature Conservation by making the Field Trip D of the Educational Programs - "The Portas de Rodão Natural Monument and the Fossil Trunks of Vila Velha de Ródão". The monitors were Hugo Oliveira and Manuela Catana.



**31 July - Workshop "Fossils as you please" for children and youngsters from the ATL of S. Miguel D'Acha.** In this workshop attended 17 children and youngster followed by 2 monitors from the ATL Summer vacations. In this workshop students clarified how could be triggered different fossilization processes (like moulding, mineralization, amber conservation and ice conservation), also clarifying the fossil concept. They yet acknowledged that the fossils can be good indicators for past environments (environment fossils) as well as the age of the rock where they're placed (age fossils), yet understanding what is the difference between ichnofossils and body fossils. The monitor who followed this workshop was Hugo Oliveira, supported by a technician from the Municipality of Idanha-a-Nova.



# IMPACT OF GEOPARK IN MEDIA

## TV

22 July (RTP1 – Verão Total live show) – Live show from Monsanto for 6 hours emission <http://www.rtp.pt/play/p1589/e161187/verao-total-2014>

25 July (Beira Baixa TV) – Scientists from Naturtejo Geopark discover fossils in Sardinia

## Newspapers & www

July (Cap Magellan) – Guide de l'été 2014

July (Ensino Magazine) – Vale Mourão and the Forest in the Living Science Centre

July/August (Jornal de Oleiros) – First National Congress of Rural Tourism was organized in Oleiros and welcomed important experts

July/August (Raiano) – University students from California study Portuguese Language and Culture at Naturtejo Geopark

1 July (Povo da Beira) – I National Congress of Rural Tourism showcased municipal potentialities

1 July (Povo da Beira) – Fair of Tejo's Flavours animated Vila Velha de Ródão

1 July (Gazeta do Interior) – More than 16000 people visited the Fair of Tejo's Flavours

3 July (O Mirante) – I National Congress of Rural Tourism

3 July (Reconquista) – Vila Velha de Ródão reunited 120 exhibitors

9 July (Gazeta do Interior) – Ladoeiro promotes the X Watermelon Festival

10 July (Reconquista) – Naturtejo Geopark – USA students in the summer course

10 July (Reconquista) – Watermelon Festival in its 10th edition

15 July (Povo da Beira) – University students from California visited the municipality of Idanha

15 July (Povo da Beira) – Ladoeiro hosts the X Watermelon Festival

15 July (Reconquista) – Naturtejo Geopark – Portuguese experts make discover in Italy

22 July (Povo da Beira) – 10th Watermelon Festival attracts thousands of visitors

23 July (Reconquista) – Watermelon Festival sells more than 40 tons of fruits

30 July (Gazeta do Interior) – Go for holidays in the countryside “600 million years of Earth History” - Discover Naturtejo Geopark

31 July (Reconquista frontpage) – New life in the valley of Sarvinda

31 July (Reconquista) – Good cinema, theatre and tour visits



# SCIENTIFIC CONTRIBUTIONS FOR THE GEOPARK AND THE GEOSCIENCES



- Rodrigues, J., Neto de Carvalho, C., Silva, P., Dias, R., Gaspar, C. & Fonseca, S. – Recursos digitais ao serviço do património geomineiro no Geopark Naturtejo. II Encontro Casa da Ciências – Portal Gulbenkian para Professores, Livro de Resumos, 61-63.

- Neto de Carvalho, C. – Pegadas de Lince-Ibérico (*Lynx pardinus*) no Plistocénico superior da Ilha do Pessegueiro (Portugal). IX Congresso Nacional de Geologia/2º Congresso de Geologia dos Países de Língua Portuguesa, Porto; Programas e Resumos, p. 91.

- Neto de Carvalho, C., Cabrera, J.S. & Rivas, R.L. - “Island from Time”: the significance of microbial mat related structures and *Skolithos* piperock in the sand flat sequences of “Roroimü” Tepui (post-Roraima Group, Venezuela). IX Congresso Nacional de Geologia/2º Congresso de Geologia dos Países de Língua Portuguesa, Porto; Programas e Resumos, p. 91.

- Soriano Soares, A.J., Rodrigues, J., Brites, G., Teixeira, A. & Turine, M. – Divulgação das geociências no Núcleo Regional de Nioaque – Geopark Bodoquena-Pantanal (Mato Grosso do Sul – Brasil). IX Congresso Nacional de Geologia/2º Congresso de Geologia dos Países de Língua Portuguesa, Porto; Programas e Resumos, p. 212.



## PROMOTION FOR THE GENERAL PUBLIC

- Tourist map of the Municipality of Idanha-a-Nova (in both Portuguese and English)
- Guide to the River beaches, swimming areas and leisure places. Blanche. (In Portuguese only; the guide is available in more than 700 distribution points in the Centre Region, especially in the tourism offices, in the river beaches and hotels. The guide is free. Good promotion about the Geopark in it).

**Programa**

**3 a 30 de Agosto**  
**Intervenções arqueológicas em sepulturas megalíticas das Moitas**

**8 e 22 de Agosto**  
**Outras práticas de campo**

**6, 13, 20 e 27 de Agosto**  
**Visitas de estudo**  
(Serra das Talhadas, Portas do Almourão, recinto muralhado do Chão de Galego, Linha Defensiva das Talhadas-Moradal, aldeia de xisto de Figueira, Portas de Ródão e Centro de Interpretação da Arte Rupestre do Tejo)

**4, 9, 11, 15, 16, 18, 23, 25, 29 e 30 de Agosto**  
**Palestras sobre temas arqueológicos**  
(Parque Urbano de Proença-a-Nova), 18 horas – entrada livre.

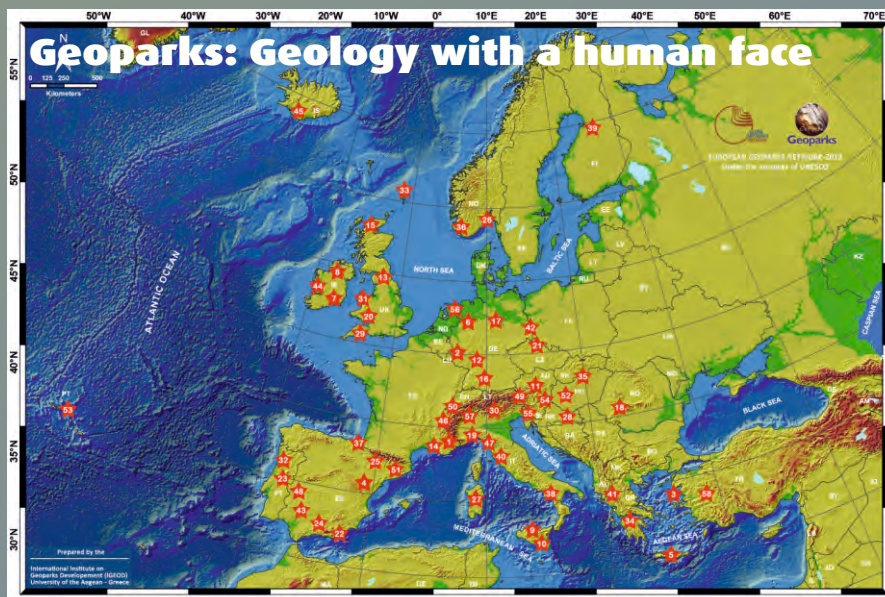
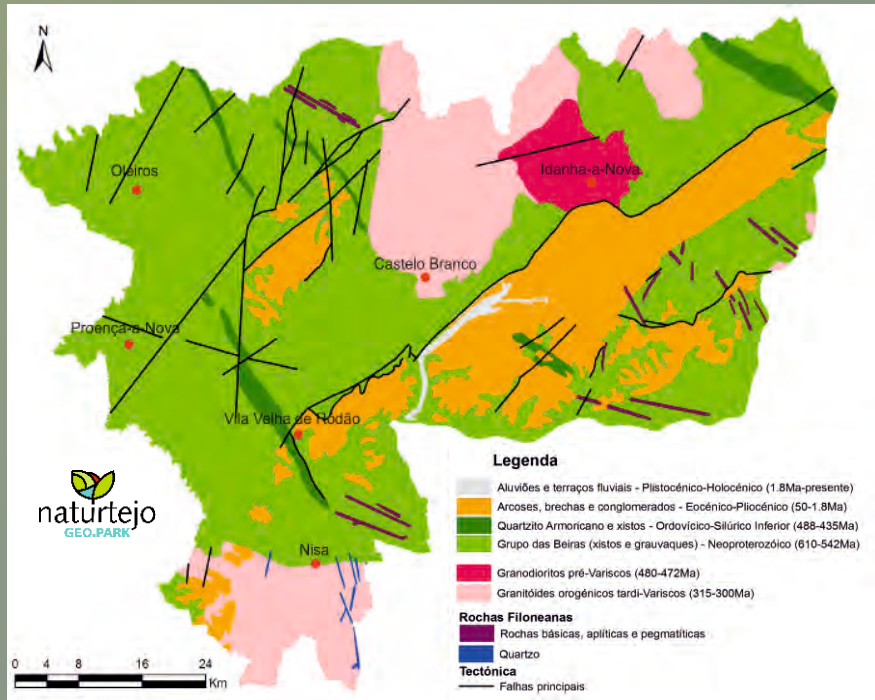
**2014**  
Proença-a-Nova International Archaeological Field Camp  
**Campo Arqueológico de Proença-a-Nova**

**Contactos para informações:**  
274 670 000

Logos of partner organizations: Proença-a-Nova, CHAIA, HERCULES, PORTO, Universidade de Aveiro, UPERFICIE, EMERITA, naturtejo, Geopark, and others.







**CRUZIANA**

GEOPARK NATURTEJO DA MESETA MERIDIONAL-EUROPEIA AND GLOBAL GEOPARK MONTHLY REPORT

[www.geoparknaturtejo.com](http://www.geoparknaturtejo.com)